

Busbar Range

Busbars are used for high current distribution and at the same time they provide connections for batteries and/or DC equipment.

We offer a number of busbars with different current ratings, and a different number of connection terminals. Each busbar is fitted out with a removable protection cover.



	Busbar 150A 2P 10 or 20 screws with cover	Busbar 150A 4P Busbar 150A 6P with cover	Busbar 250A 2P 6 or 12 screws with cover	Busbar 250A 2P 4 screws with cover	Busbar 600A 4P Busbar 600A 8P with cover
Max. current	150A	150A	250A	250A	600A
Max. Voltage	70VDC	70VDC	70VDC	70VDC	70VDC
Terminal diameter	6.35mm	6.35mm	8mm	8mm	9.53mm
Terminal height	17mm	17mm	17mm	17mm	19mm
Hex nut material	Tin-plated copper	Tin-plated copper	Tin-plated copper	Tin-plated copper	
Flange nut material					Stainless steel
Recommended torque	7 N·m	7 N·m	13 N·m	13 N·m	20 N·m
Terminal screws	4.2mm	4.8mm	4.8mm	4.8mm	4.2mm
Terminal material	Stainless steel	Stainless steel	Stainless steel	Stainless steel	Stainless steel
Busbar strip material	Tin-plated copper (2.4 x 19 mm)	Tin-plated copper (1.4 x 18 mm)	Tin-plated copper (6.35 x 25 mm)	Tin-plated copper (5 x 24 mm)	Tin-plated copper (19 x 24 mm)
Base material	ABS, black, UL 94 V-0	ABS, black, UL 94 V-0	ABS, black, UL 94 V-0	ABS, black, UL 94 V-0	ABS, black, UL 94 V-0
Cover material	Clear Polycarbonate UL 94 HB	Clear Polycarbonate UL 94 HB	ABS, black, UL 94 V-2	ABS, black, UL 94 V-2	ABS, black, UL 94 V-2
Weight	10 screws: 0.3kg 20 screws: 1kg	4 terminals: 0.2kg 6 terminals: 0.27kg	6 screws: 0.25kg 12 screws: 0.35kg	4 screws: 0.45kg	4 terminals: 0.75kg 8 terminals: 1.3kg
Dimensions (hwxwd)	10 screws w/ cover: 45 x 152.4 x 32 mm 20 screws w/ cover: 45 x 232 x 32 mm	4 terminals w/ cover: 45 x 152.4 x 31.8 mm 6 terminals w/ cover: 45 x 231.7 x 31.8 mm	6 screws w/ cover: 65 x 216 x 86 mm 6 screws w/out cover: 42 x 153 x 38 mm 12 screws w/ cover: 48 x 237 x 70 mm 12 screws w/out cover: 41 x 201 x 38 mm	4 screws w/ cover: 48 x 237 x 70 mm	4 terminals w/ cover: 65 x 216 x 86 mm 8 terminals w/ cover: 65 x 327 x 86 mm

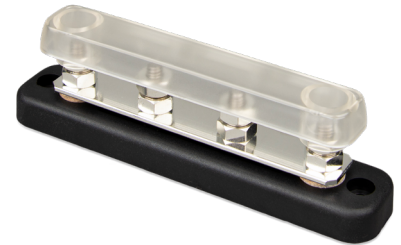
Busbar Range



Busbar 150A 2P w/ 10 screws + cover
VBB115021020



Busbar 150A 2P w/ 20 screws + cover
VBB115022020



Busbar 150A 4P + cover
VBB115040020



Busbar 150A 6P + cover
VBB115060020



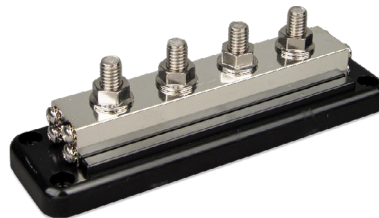
Busbar 250A 2P w/ 6 screws + cover
VBB125020620



Busbar 250A 2P w/ 12 screws + cover
VBB125021220



Busbar 250A 4P + cover
VBB125040010



Busbar 600A 4P + cover (not shown)
VBB160040010



Busbar 600A 8P + cover
VBB160080010

	Dual Terminal Stud M8
Max. current	150A
Max. Voltage	70VDC
Terminal diameter	M8 (7.9375 mm)
Terminal height	17mm
Terminal material	Stainless steel
Hex nut material	Stainless steel
Recommended torque	10 N-m
Busbar strip material	Tin-plated copper (1.0 x 13 mm)
Base material	Glass fiber reinforced nylon
Weight	70g
Dimensions (hwxwd)	45 x 43 x 32 mm

